

# The BATHROOM Protocol

TREATING COMMERCIAL AND RESIDENTIAL

*Pest invasions are especially visible in both commercial and residential bathrooms. Fight them with a protocol featuring Zoëcon® Professional Products.*



**Featured Products:**



**Zenprox® EC Insecticide**



**Lambda 9.7 CS Insecticide**



**Gentrol® Family - Aerosols, Concentrate, and Point Source Synthetic insect growth regulators**

## Target Insects:



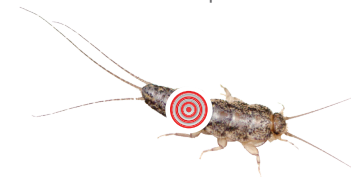
### Ants

Different ant species require different treatments, so be sure to properly identify the invaders. The key is to identify what is drawing them in – usually food and water sources – such as standing water or hair in drains.



### Cockroaches

In both commercial and residential bathrooms, water tends to pool up and attract cockroaches. Puddles should be wiped regularly to avoid these pests.



### Silverfish

Silverfish love humidity, so advise clients to ventilate bathrooms after showering.

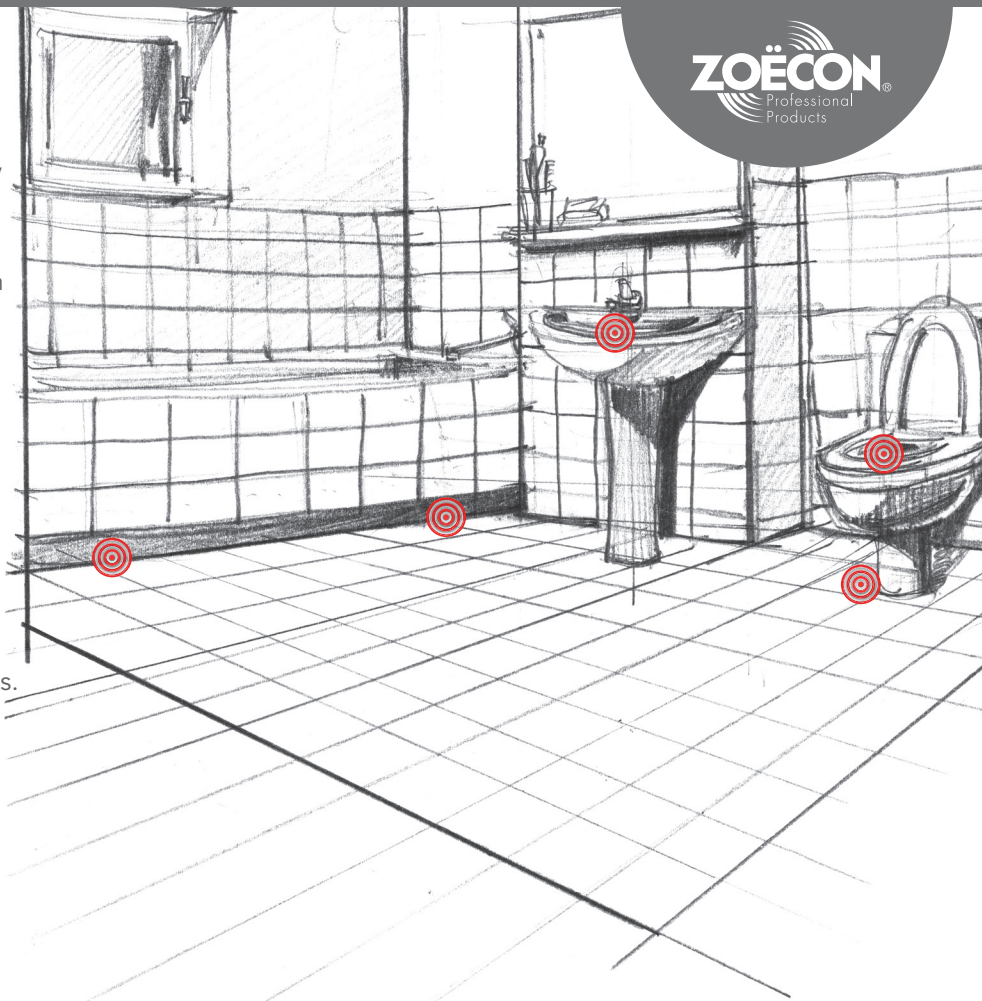


### Occasional Invaders

When identifying an occasional pest infestation, keep in mind that different species invade during specific weather conditions.

## Where to Look: ➤

- 🎯 To spot ants, look along the edges of toilets, sinks, bathtubs, pipes and baseboards.
- 🎯 Because they are unable to climb on smooth surfaces, silverfish are often found trapped in sinks and tubs. Look for infestations in baseboards, plumbing jets and humid areas.
- 🎯 Springtails and other occasional invaders need moisture to survive, so they often congregate around sinks and tubs.
- 🎯 Look for cockroaches underneath sinks, drains, rubber mats and in dark, damp places.



### A "Greener" Alternative:

For accounts that request an eco-friendly pest control protocol for bathrooms, use the following techniques:



Low fragrance option to kill crawling insects, spray **Essentria® All Purpose Insecticide Concentrate** around cracks, crevices and drains.

Use **EcoPCO® D-X Dust Insecticide** around drains, in wall voids and around the bases of toilets, sinks and bathtubs.



Apply **Essentria® IC-3 Concentrate** to exposed areas, cracks, crevices, corners and drains.

Spray **EcoPCO® ACU Insecticide** in cracks and crevices, behind appliances and under sinks.



## A Three-Step Solution:

1



Treat cracks and crevices of window frames with **Zenprox® EC** or **Lambda 9.7 CS** insecticides.

2



Apply crack, crevice and spot treatments to lights and exhaust fans, which are often entryways for pests.

3



Open and treat drains and plumbing access to jetted bathtubs with **Gentrol® IGR Concentrate**, **Gentrol® Aerosol** and **Gentrol® Complete Aerosol**.